



Passion for hunting and shooting

Instructions for use of the SB-Mini / SB-Mini Plus case printer



Instructions for using the printer:

First, create the stamp by cutting out the figures from the rubber stamp plate supplied (the figures and writing must be cut out in a rectangular shape, do not cut around the figure, see example in **figure 1**). Once you have cut out the desired figures, clean the back of the stamp with a mild solvent (such as acetone or white petroleum), then stick them on the double-sided tape supplied and cut off the excess double-sided tape. Also degrease the stamp holder base with acetone and position the figures as in the photo. Always mount the trailing strip on the right, cutting it from the supplied stamp plate. Insert the carriage and its scraper into the rear part of the printer and apply the ink on the roller, a small amount is enough, see **figure 3**. Proceed with inking the roller by turning the knob on the left anti-clockwise (see **figure 4**) until the roller is completely inked. At this point you can insert the stamp prepared previously (see **figure 5**). Once inserted it is possible to move it to the right or left based on the type of caseback present on the case to be printed. Then insert the cartridge case (see **figure 6**) and rotate the lever anti-clockwise until the cartridge case is ejected. For the first print it is a good idea to turn the crank a couple of times to ink the stamp well. It can print from 12 to 36 gauge without the need for adjustments. Once the work is finished, proceed with cleaning the machine and the stamps. Extract the carriage from the printer and insert the tray with solvent. Then clean the machine with the supplied brush (see **figure 7**). Then dry with a clean cloth and clean the scraper and put it back in its place. Finally, remove the stamp holder and clean the rubber with a clean paper cloth. Use a mild solvent as described above (Acetone or white petroleum) to clean the rubber. **DO NOT CLEAN THE STAMP WITH ANY NITRO THINNER.** (See **figure 9**). We recommend cleaning any area of the printer that has become dirty. Thorough cleaning will maintain the condition of your printer better.

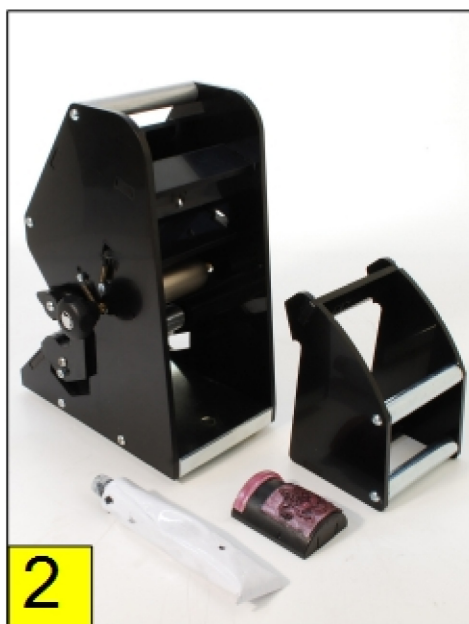
**ESEMPIO DI COMPOSIZIONE TIMBRI
ATTACCATI DIRETTAMENTE ALLA BASE
PORTA-TIMBRI CON NASTRO BIADESIVO**



1

MAX LUNGHEZZA
TIMBRABILE

STRISCIA IN GOMMA INDISPENSABILE
PER IL CORRETTO FUNZIONAMENTO
DELLA STAMPANTE. DISPONIBILI DA
ROTAGLIARE SUL NOSTRO FOGLIO
TIMBRI N.1



2



3



4



5



6



7



8



9